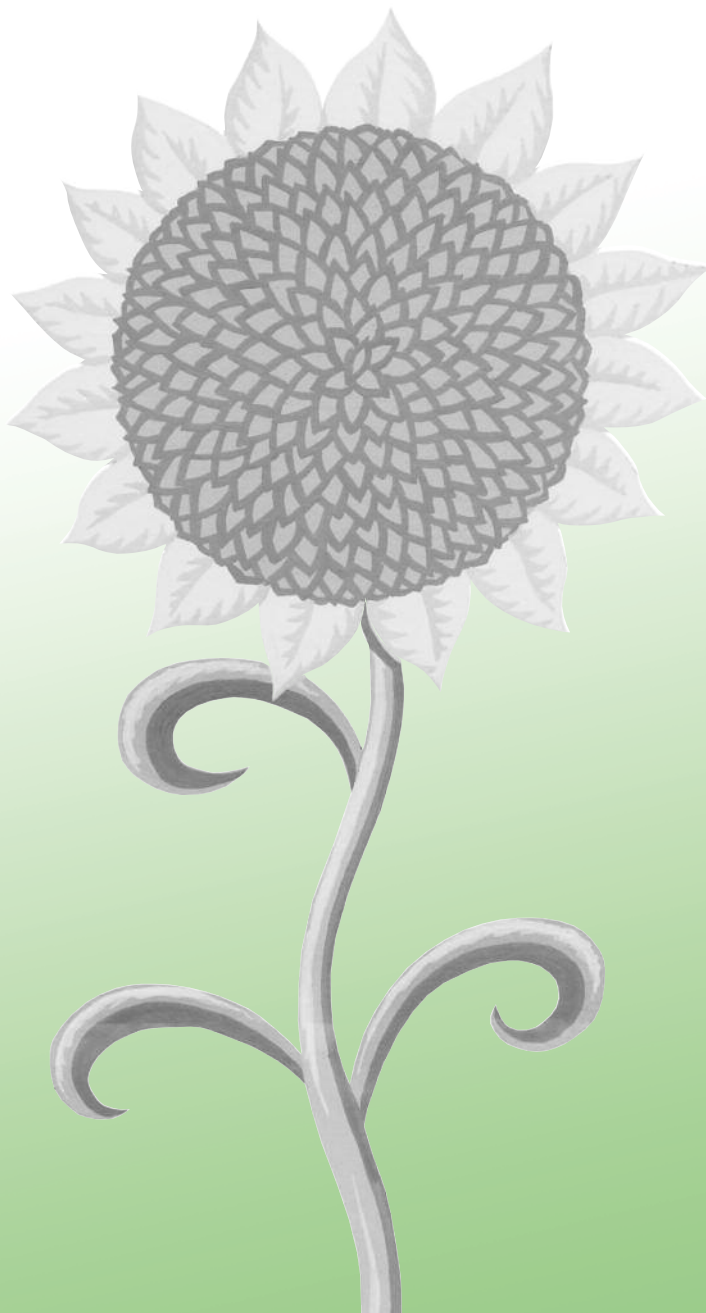




Learning Disability and Mental Health: Knowledge for Improving Clinical Practice



**A five-day course on
working with people with
learning disability and
mental health disorder
(Dual Diagnosis)**

16 – 20 November 2009

**to be held at
Heaton Mount
Bradford**

Learning Disability and Mental Health: Knowledge for Improving Clinical Practice

16 – 20 November 2009

This five-day programme focuses on the mental health needs of people with learning disabilities. Participants will explore the knowledge base of mental health aspects of young people and adults with learning disabilities, practise assessment tools, work on case studies covering a range of mental health issues and identify and work on service development issues. This course will also explore therapeutic approaches such as psychodynamic approaches; solution focused therapy, cognitive behaviour therapy and psychopharmacological approaches.

This course aims to enable participants to analyse and reflect on current practice and to explore ways of improving their own practice and service.

WHO SHOULD ATTEND?

This is a course for health and social care practitioners in the field of learning disability and mental health.

- Anyone who wants to learn more about mental health aspects of people with learning disabilities
- Professionals from adult learning disability and mental health services
- Professionals from child and adolescent mental health services
- Commissioners and service managers

PARTICIPANTS WILL LEARN ABOUT:

- the mental health needs of young people and adults with learning disabilities
- assessments
- therapeutic interventions
- working through case examples
- cultural diversity perspectives
- Identifying service issues and solutions

The course will also provide an excellent opportunity to network and share good practice

Course Programme

Day One	Day Two	Day Three	Day Four	Day Five
<ul style="list-style-type: none"> ■ Dimensions of mental health ■ Mental health of people with learning disabilities ■ Nature, prevalence and manifestation ■ Assessment strategies ■ Screening for mental health disorders 	<ul style="list-style-type: none"> ■ Assessment of mental health disorders ■ Group work – video vignettes ■ Group work – case studies ■ Interviews and case histories 	<ul style="list-style-type: none"> ■ Therapeutic approaches ■ Solution focussed therapy ■ Cognitive behaviour therapy 	<ul style="list-style-type: none"> ■ Forensic issues ■ Service perspectives ■ Case study analysis ■ Cultural perspectives 	<ul style="list-style-type: none"> ■ Policy and practice – service developments ■ Service evaluation ■ Case study exercises

COURSE TIMES AND VENUE

The course will run from approximately 9.00 am to 5.00 pm each day.

Places are limited to 30.

Heaton Mount is part of Bradford University's School of Management campus, which is situated about two miles north of the city centre. Full joining instructions will be sent to registered participants.

Please note that overnight accommodation may be available at the venue. Contact Heaton Mount direct on (01274) 234485. If you require details of other local hotels please indicate on the booking form.

FEE AND BOOKING

The course fee is £595 per person, inclusive of lunches, refreshments and course materials. Please send completed booking forms to:
Events Bradford
University of Bradford
Bradford, West Yorkshire, BD7 1DP

Full course payment must be received prior to the event.

Enquiries about booking should be directed to Events Bradford:
Tel: (01274) 233216/7
Fax: (01274) 233218
Email: events@bradford.ac.uk

Enquiries about the content should be directed to:
Raghu Raghavan
School of Health, Community and Education Studies
Northumbria University
Coach Lane Campus East, Benton
Newcastle upon Tyne, NE7 7XA
Email: raghu.raghavan@northumbria.ac.uk
Tel: (0191) 2156093

CANCELLATION CONDITIONS

Cancellation of places must be made in writing to Events Bradford (email and faxes accepted). Cancellations received between 23 October and 6 November will be subject to an administrative charge of 25% of the fee. For cancellations received after 6 November, or for non-attendance on the day, the full fee will be payable.

We reserve the right to cancel the course if necessary, eg failure to recruit minimum number, in which case our liability will be limited to refund of fees.

COMMENTS FROM PREVIOUS PARTICIPANTS

"Presenters knowledgeable and able to apply theory to practice"

"I enjoyed the course because it was full of up-to-date relevant information"

"I feel this course has provided me with a valuable understanding and some additional skills that will help me develop our skills base in this area"

"Enjoyed the course and meeting other people from different disciplines"

"This course provides a comprehensive tour of assessment, treatment/intervention plans"

"I really enjoyed the course and everything I have learnt. It has inspired me to go back to work with more enthusiasm and motivation"



**LEARNING DISABILITY AND MENTAL HEALTH:
KNOWLEDGE FOR IMPROVING CLINICAL PRACTICE
16 - 20 NOVEMBER 2009**

BOOKING FORM

Title First Name Surname/Family name

Organisation/place of work

Job Title/Position

Qualifications (professional/academic)

Address

..... Postcode.....

Daytime telephone Fax number

e-mail:

Course fee: £595 (includes lunch, refreshments and course materials)

I enclose a cheque for £..... made payable to 'University of Bradford'

I wish to pay by credit card (*please do not give credit card details on this form. Instructions on how to pay will be sent with acknowledgement of booking*)

I would like details of overnight accommodation

Please indicate any requirements regarding diet, access, communication etc:.....

Please tick if you would like to be contacted regarding the above requirements

Signed Date

Return to: Events Bradford, Norcroft Centre, University of Bradford, Bradford, West Yorkshire BD7 1DP

ABOUT THE SPEAKERS

Dr Raghu Raghavan is Reader at the School of Health, Community and Education Studies, Northumbria University. Raghu has worked with people with learning disabilities with behaviour and/or mental health issues. He is an active researcher in the field of learning disability and mental health, user and carer perspectives, transition, social networks, service models and ethnicity. Raghu has a keen interest in needs assessment and psychosocial interventions for people with learning disabilities.

Dr Pradip Patel is a Consultant Psychiatrist working with adults with a learning disability. Pradip has a special interest in assessment and treatment of mental health disorder in people with learning disabilities. He has worked with researchers at the Hester Adrian Research Centre (University of Manchester) in developing the Psychiatric Assessment Schedule for Adults with a Development Disability (PAS-ADD).

Vicky Bliss is currently working as a Senior Clinician in Psychology in Chorley & South Ribble Mental Health Service, having worked in learning disabilities for the past 20 years, both in the United States and in the UK. Special areas of interest include Solution Focused Brief Therapy with adults who have learning disabilities, especially high functioning autism or Asperger's Syndrome. Research interests are clinically based in outcomes and process of using SFBT with this population.

Professor John Taylor is a Consultant Clinical Psychologist at the Northgate Hospital in Northumberland. John is an active researcher in forensic learning disability issues and psychosocial interventions and has published widely on these themes. He is interested in the development of novel structured clinical assessment and treatment protocols for people with developmental disabilities within a cognitive-behavioural theoretical framework.

Professor Dave Dagnan is a Consultant Clinical Psychologist and Clinical Director for Learning Disability Services in the North Cumbria Mental Health and Learning Disability NHS Trust. He is a leading figure in the UK in relation to cognitive behaviour therapy for people with learning disabilities and has published widely on the subject.

Please provide three reasons for attending this course:

1.
.....
.....
2.
.....
.....
3.
.....
.....

This leaflet will be made available in large print, in Braille or on audio if requested. Please contact Events Bradford for details.